

The background of the slide is a faded, semi-transparent image of the United States flag, showing the stars and stripes. The text is overlaid on this background.

# Chapter 1 - Flights 11 and 175: How could the hijackers have succeeded?

From the book, *“The New Pearl Harbor:  
Disturbing Questions about the Bush  
Administration and 9-11,”* by David Ray Griffin

“The question you’re not supposed to ask is  
the most important one”

*Mason Cooley*

# Outline of presentation

- FAA background
- Flight 11 timeline
- Flight 175 timeline
- The collapse of the World Trade Center Towers 1 & 2
- The collapse of World Trade Center 7
- Summary
- What can you do?



# FAA background

- From the FAA Air Traffic Control regulations, chapter 10:
  - Consider that an aircraft emergency exists when there is unexpected loss of radar contact and radio communications with any aircraft.
  - If an aircraft deviates more than 15 degrees or two miles from a flight course, it is an emergency.
  - If there is any doubt that a situation constitutes an emergency or potential emergency, handle it as though it were an emergency.

# Response to an emergency

- The FAA has responsibility to notify NORAD
- NORAD dispatches fighter jets to the aircraft in question - termed an *intercept*
- Intercept is an automatic and routine response to a possible emergency
- Prior to 2001 intercepts required no upper level approval
- There were 67 such intercepts September 2000 to June 2001



# Response to an emergency

- Intercept protocol calls for a series of graduated responses to non-responsive aircraft
- Only the final stage (shoot-down) requires top military approval.
- Example: Payne Stewart's 1999 plane crash
  - NORAD notified within minutes of missed turn
  - Jets alongside plane in 14 minutes

# Flight 11 timeline

- **7:59 am**: American Airlines Flight 11 leaves Boston Logan airport
- **8:14 am**: fails to respond to an order from an FAA ground controller
- **8:14 am**: radio and transponder go off
- **8:20 am**: FAA ground control observes plane radically depart from course on radar
- **8:21 am**: flight attendants report via radio telephone that the plane has been taken over by hijackers who have killed some people on the flight
- **8:28 am**: plane turns toward New York
- **8:30 am** or **8:40 am** (accounts vary): FAA notifies NORAD
- **8:46 am**: Flight 11 crashes into the World Trade Center North Tower
- **8:52 am**: fighter jets dispatched from Otis AFB in Cape Cod Massachusetts



# Problems with Flight 11

- Why wasn't NORAD notified at 8:14 when the transponder went off, or at most by 8:20 when it departed course?
- Once a hijacking was confirmed at 8:28, with deaths on board, why was nothing done for almost 20 additional minutes?
- Once NORAD was notified, why did it take another twelve minutes to launch jets that routinely scramble in three minutes?
- Why were jets dispatched from Otis AFB in Massachusetts 180 miles away?

# Flight 175 timeline

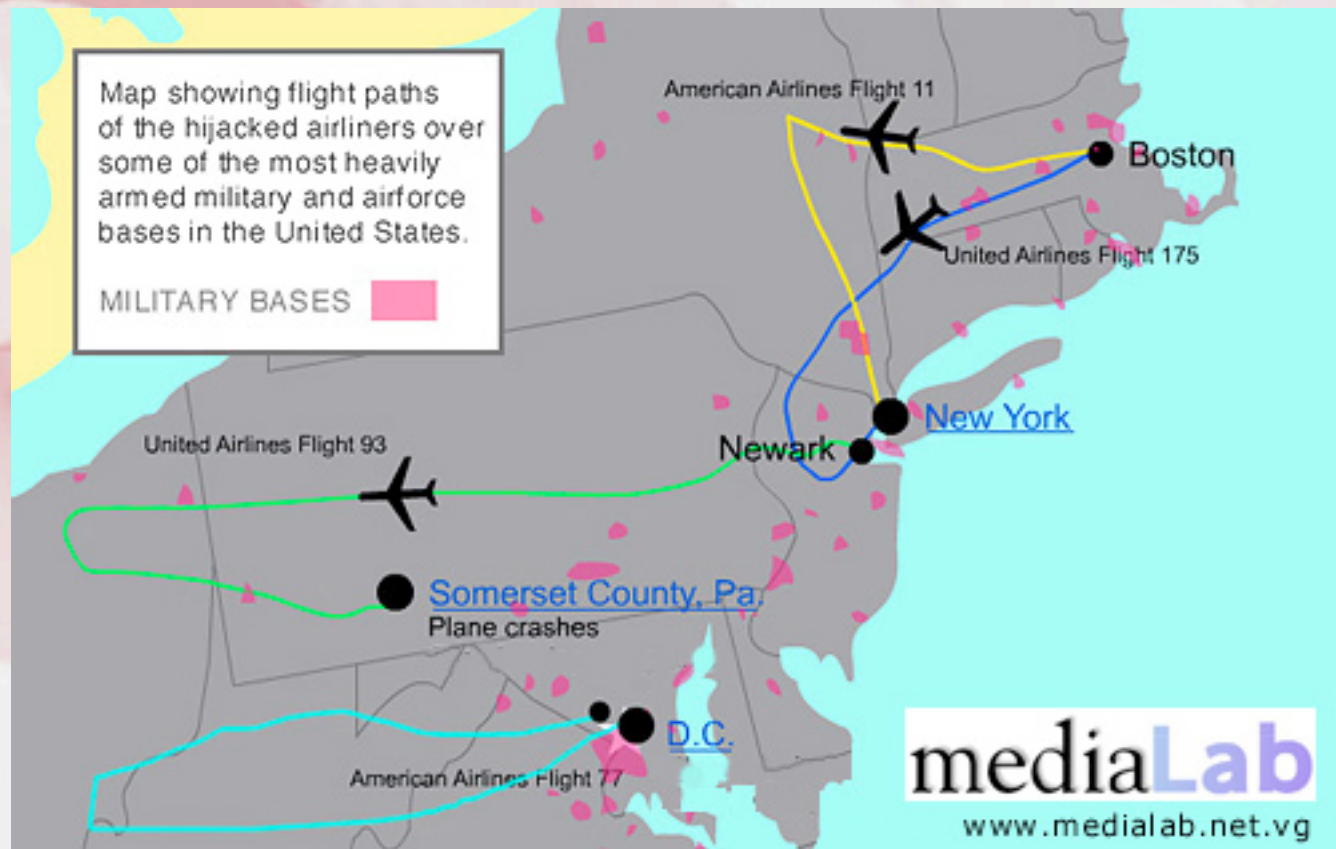
- **8:14 am:** UA Flight 175 leaves Boston
- **8:42 am:** radio and transponder are turned off, veers off course
- **8:43 am:** NORAD reportedly notified
- **8:46 am:** scramble order given
- **8:52 am:** F-15's take off from Otis AFB (same jets issued for Flight 11)
- **9:03 am:** impacts World Trade Center South Tower



# Problems with Flight 175

- Why six minute delay from scramble (8:46) to take-off (8:52?)
- Again, why jets from Otis in Massachusetts instead of from McGuire in New Jersey?
- Why were interceptors not flying fast enough to catch Flight 175?
  - F-15's were 70 miles from Manhattan when Flight 175 impacted at 9:03
  - $(180 - 70)$  miles covered in 11 minutes = only 600 mph
  - F-15's are capable of 1875 mph

# Flight paths and military bases of the Northeast U.S.





# War games on morning of 9-11

- National Reconnaissance Office in Virginia was running a plane-into-building drill simulation on the morning of 9-11
- NORAD itself was on the second or third day of a large-scale multiple-incident-response exercise called Vigilant Guardian
- Some commanders were originally confused about whether hijack reports were part of the drill
- Readiness should have been better than usual - all desks staffed, planes ready, etc

# The collapse of World Trade Center Towers 1 & 2

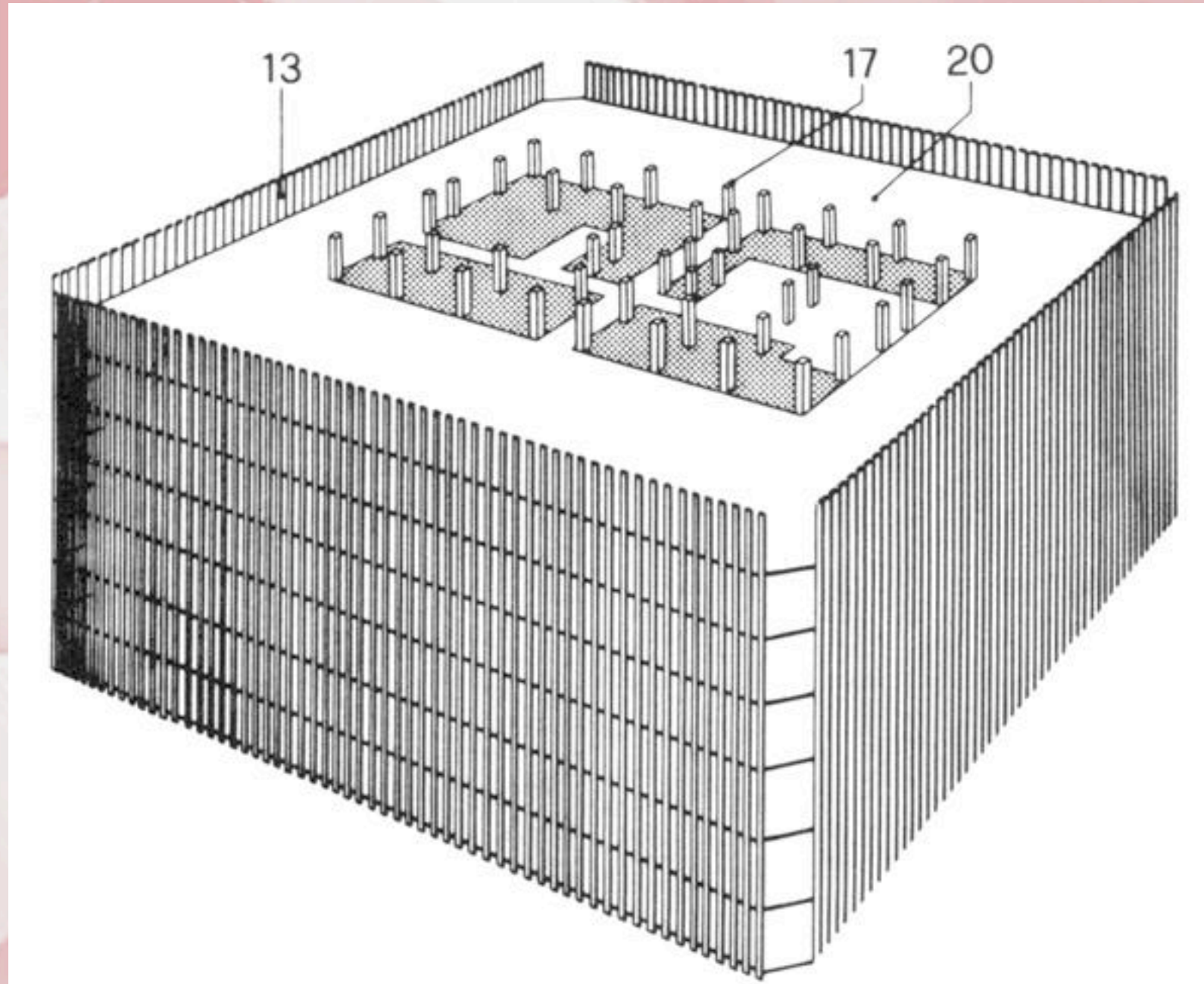
- Official account is that impact plus intense heat from fire weakened buildings
- Some have speculated that heat actually melted supports
- FEMA report of May 2002 declared "the sequence of events leading to the collapse of each tower could not be definitively determined."



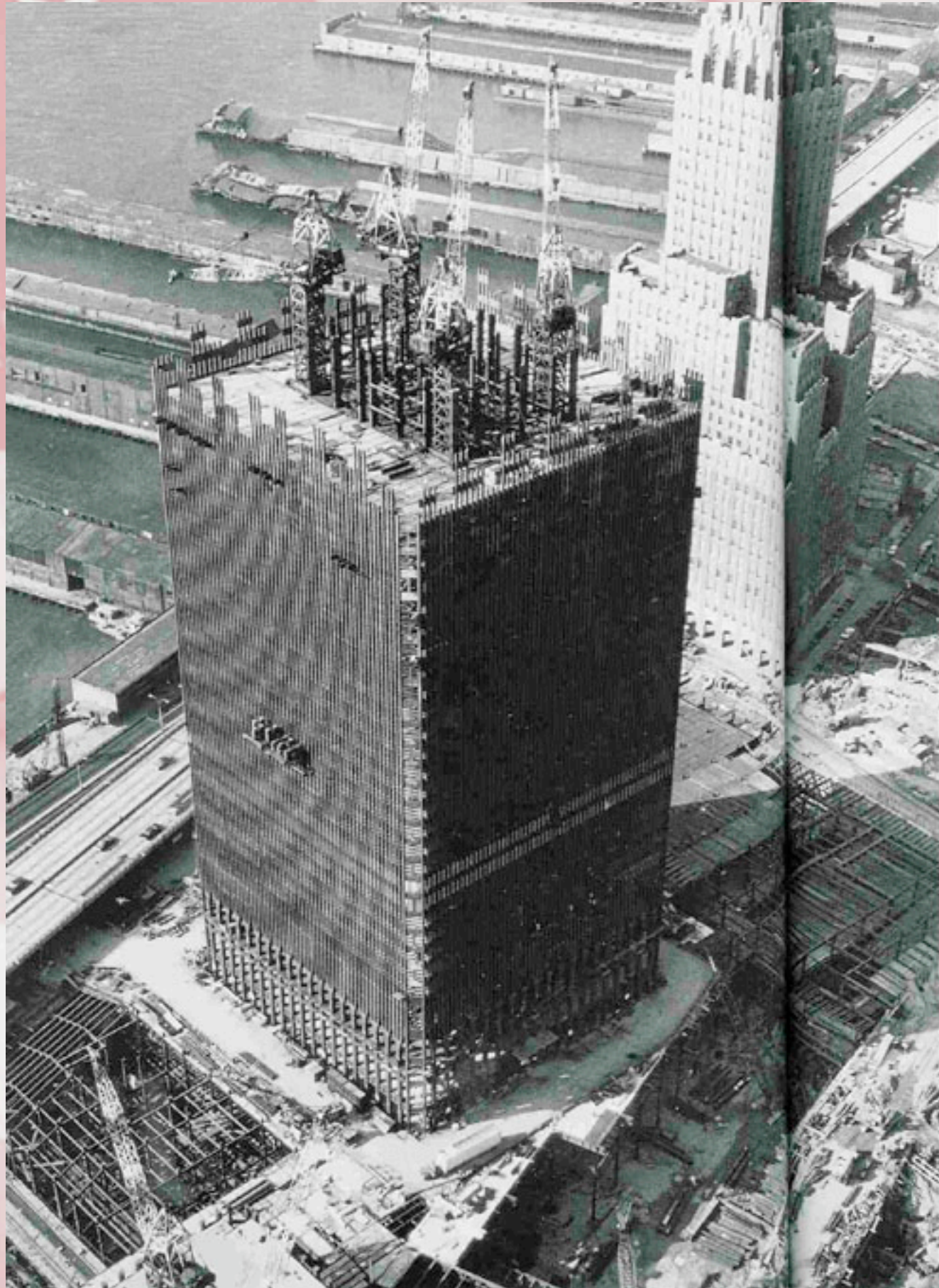
# Tower construction

- Built in 1973
- 1300 feet tall, 110 stories
- FEMA report said "... the floor framing system was complex and substantially more redundant than typical bar joist floor systems."
- 47 vertical steel columns in the center of the building
- 240 vertical steel columns around the perimeter
- Designed specifically to withstand impact and resulting fire from large jet airliner

# Tower construction details









# Problems with official account of collapse

- North Tower was struck first at 8:46 am, yet it collapsed second at 10:28 am (102 minutes)
- South Tower was struck second at 9:03 am, yet it collapsed first at 9:59 am (56 minutes)
- Maximum theoretical temperature achievable by open hydrocarbon fire is  $\sim 1800^{\circ}\text{F}$  in ideal conditions
- Fires in the towers were fuel-rich and oxygen-starved, as evidenced by black smoke
- Likely maximum compartment temperature of 1200-1300 $^{\circ}\text{F}$ .



# North and South Tower fires

- North tower fire was substantial
  - Fuel load entirely contained within building
  - Burned continuously, with flames visible from impact until collapse
- South tower fire not a direct hit (corner)
  - Most fuel burned outside
  - Much less smoke
  - Appeared to die down





# Photos of the South Tower fireball





# Tower fires

- Likely not as hot as claimed
- Most of the fuel in Flight 175 burned up in spectacular initial fireball
- Firemen in the buildings, at the floors of impact, reported that fires were controllable
- Never before in history have steel frame buildings collapsed due to fire

# North Tower fire photo



Even North Tower fire was hardly a raging inferno, as a woman is visible in opening of crash



# Other fires in steel-framed buildings

- Broadgate fire (London, 1990)
  - 14 story steel frame building with composite long-span trusses, composite beams, and composite floor
  - Fire occurred during construction phase
    - No fireproofing
    - No sprinkler system
  - Despite compartment temperatures in excess of 1800°F, steel components experienced 1100°F
  - Structure was distorted and deflected, but no failure

# Other fires in steel-framed buildings

- Meridian Plaza fire, Philadelphia, February 1991
  - 38 story steel building
  - Fire started in discarded cleaning rags, grew quickly
  - Building lacked sprinklers, so fire consumed 8 floors over 18 hours
  - Despite being described as the “fire of the century” by Philadelphia officials, no part of the building collapsed





# Official account elaborated

- Poor insulation blamed on corrupt Port Authority, which is not subject to building codes
- Specific failure point claimed to be angle clips which held floor joists to columns
- Alleged that floors were built without substantial beams
- "Zipper-like" failure of clips led to sequential failure in a matter of seconds

# Problems with elaborated Official Story

- Even this theory seems to require more heat than was observable, especially in South Tower
- Hundreds of joints were required to break simultaneously
- Buildings were observed to fall within 10 seconds, which is nearly free-fall speed: where was resistance of joints at all?
- Rubble pile was only three stories tall; much of the central column should have been left standing
- Still have the reversal of expectations: why did the second tower struck fall first?



# The case for demolition as cause of collapse

- Towers would need to be brought down before fires went out
- South Tower had less fuel in building, thus was first to die down
- Rubble was very small, much of it reduced to dust
- Steel debris was small and broken at joints
- Some witnesses, including firemen, reported explosions
- Explosions were reported at ground level before collapse



# Photo: ejection of debris



September 11, 2001

Photo © 2001 Bill Biggart

- Debris was observed ejected below collapsing wave at extremely high speed, consistent with use of explosives

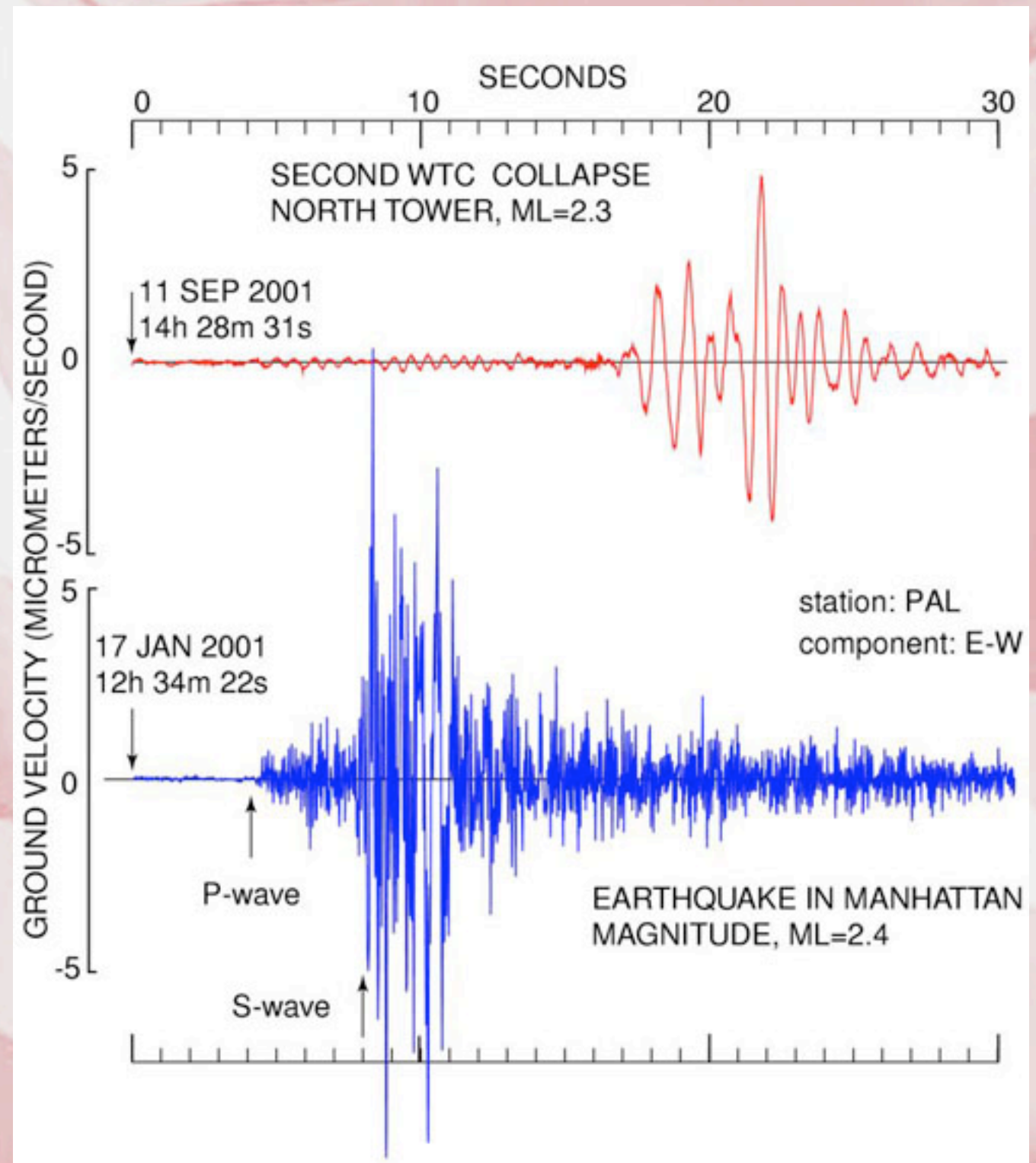


# Video: observe flashes in floors below collapse wave



# Seismic evidence of demolition

- Columbia University Earth Observatory recorded seismic data
- Seismic data shows shocks increasing for first five seconds, then dropping abruptly, then tapering off





# Interpreting seismic data

- Demolition is done with a progressive series of charges - first five seconds
- Demolition would work from top down - video evidence supports this
- Charges would have to be strongest at the bottom - hence increasing intensity
- Tapering phase was the remainder of collapse itself

# Cover-up

- Controlled Demolition, Inc. given contract to clean up WTC site
- Debris removed quickly and shipped to China
- Architectural drawings showing steel structure have not been released to independent investigators
- Bill Manning, editor of Fire Engineering trade magazine, called investigation into collapse "a half-baked farce"
- Mayor Bloomberg has steadfastly refused to release any data such as emergency radio recordings, even when the victim's families have consented



# Summary: case for demolition

- Variety of circumstantial evidence
- Not conclusive for the case of North and South Towers
- Controversial
- One of best sites for research on this topic is <http://www.plaguepuppy.net/>

# World Trade Center 7

- Witnesses report major explosion in building shortly after impact of Flight 11 on North Tower
- Not hit by any airplane
- Not even hit by much debris
- Somehow caught fire (not reported until 4:10 pm)
- Firemen did not fight fire, sprinkler system failed, pump failed and spread diesel fuel
- Collapsed totally within its own footprint at 5:20 pm



# World Trade Center 7

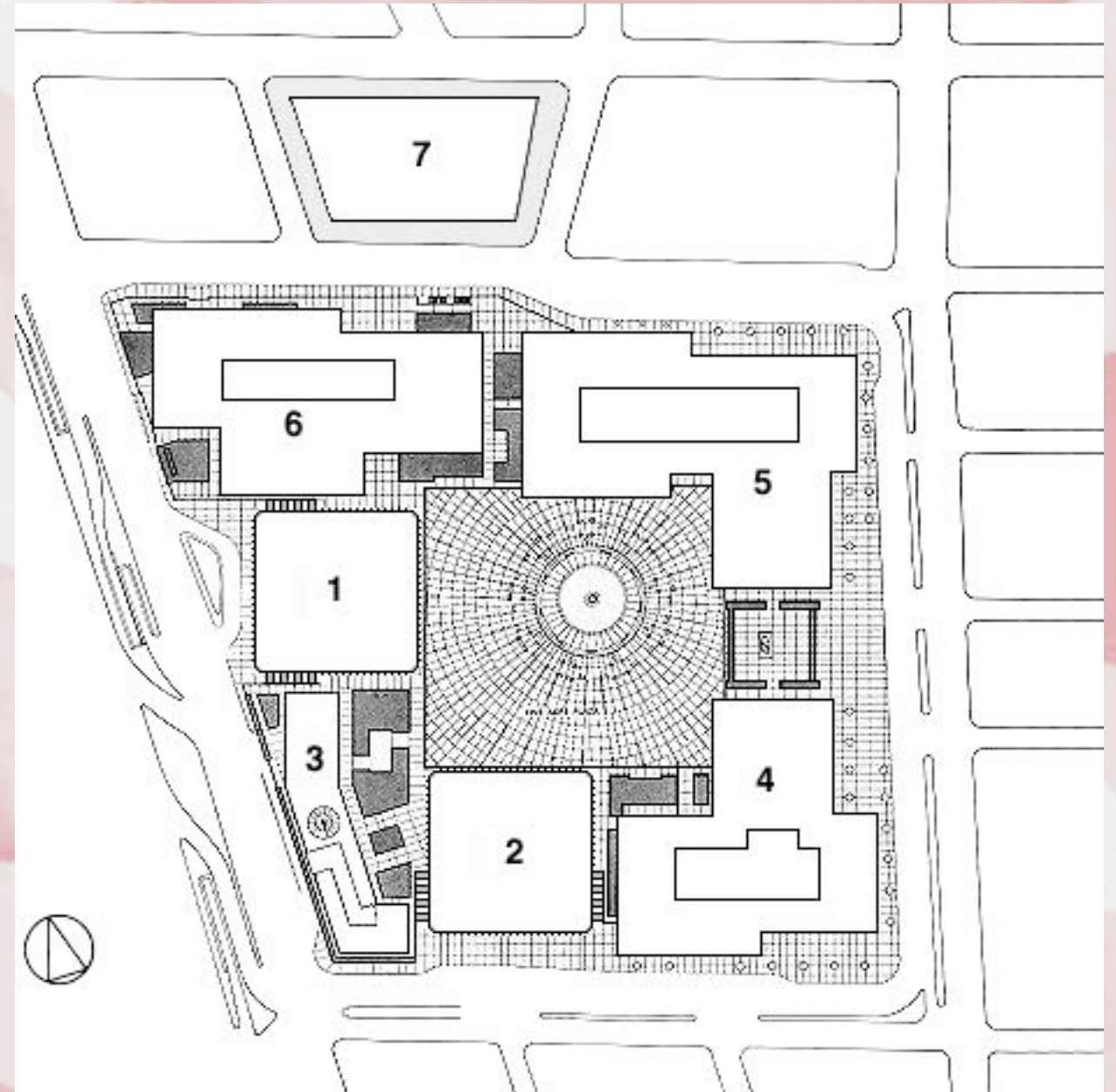
- 47 stories
- Modern steel-framed construction
- Tenants included:
  - Mayor Rudy Giuliani's emergency command post
  - Northeast regional office of the Securities and Exchange Commission
  - Extremely large and well-staffed CIA station





# World Trade Center 7

- 355 feet away from North Tower



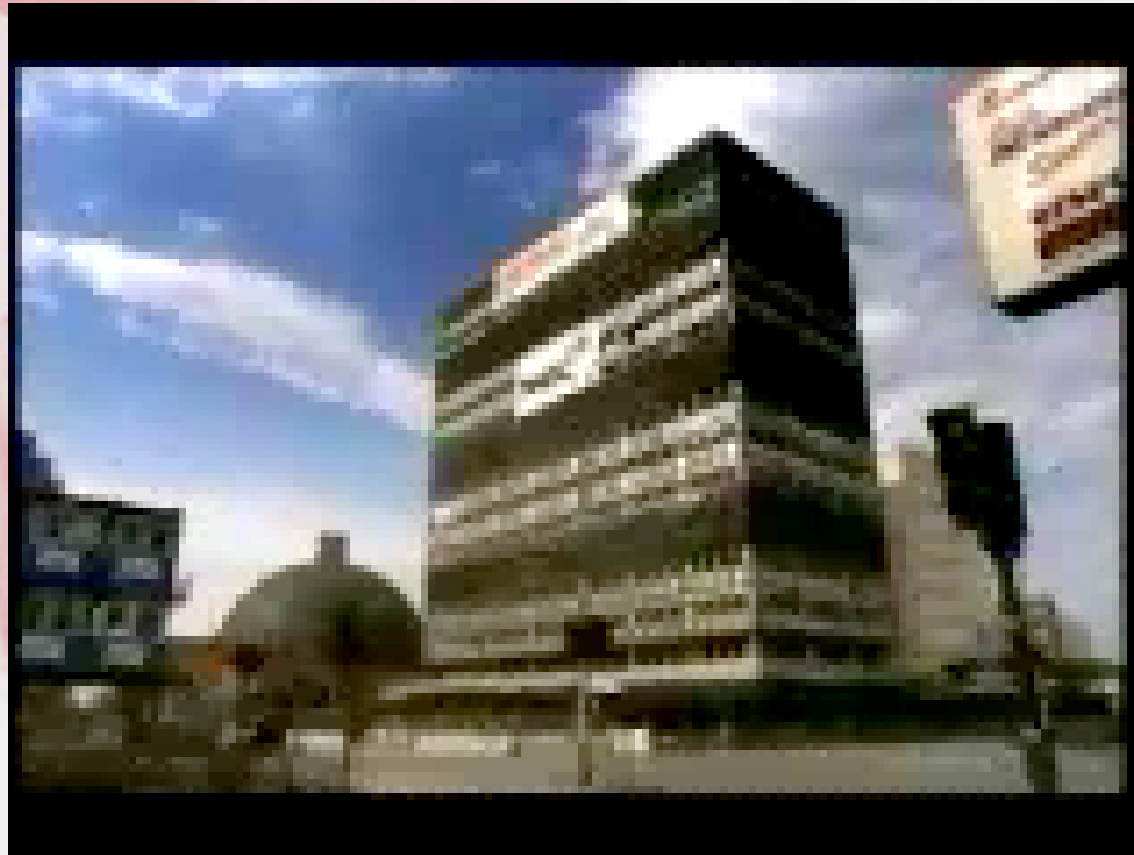


# CBS video showing collapse of World Trade Center 7



- Note squibs (cutting charges going off down the right side of the building)

**Compare with video of  
controlled demolition**





# Problems with Official Story of WTC 7

- Buildings 4, 5, and 6 also had fires, did not collapse
- Collapse was smooth and total, just like demolition
- Despite building's asymmetrical internal steel structure, collapse was even
- Fell within its own footprint, no sagging
- Hot spots in the rubble and molten steel reportedly found
- One of the best sites on this topic is <http://www.wtc7.net/>

# Summary: complicity?

- No forensic investigation, evidence quickly removed - at least official complicity in cover-up
- If involved in demolition, even of just WTC-7, proves foreknowledge and active planning by intelligence agencies
- Failure to intercept planes in direct contradiction of standing regulations - points to involvement at least by the Pentagon in attacks



# Unanswered questions

- To Richard Myers and Ralph Eberhard, the military generals responsible for the United States air defense on 9-11:
- Why did the U.S. air defense system fail to follow standard operating procedures for errant air craft, such as were long in place before Sept. 11th?
- Under these automatic procedures, the U.S. air defense system sent jet fighters to intercept errant planes 67 times in the year prior to 2001; what was the average response time of these routine intercept actions?
- Who set the date of the Vigilant Guardian war-game exercise, and when was it set?

# Unanswered questions

- Other relevant data that should be released:
  - The original passenger manifests of the four flights, including documents such as boarding passes and other paper and electronic receipts
  - Full, uncensored data from any undamaged cockpit voice recorders and “black boxes”
  - Full records of phone calls placed from hijacked planes
  - Deployment and readiness plans in effect on Sept. 11th for bases responsible for air defense such as Otis, Langley, Andrews, and other air force bases in NE U.S.



# So, what can you do?

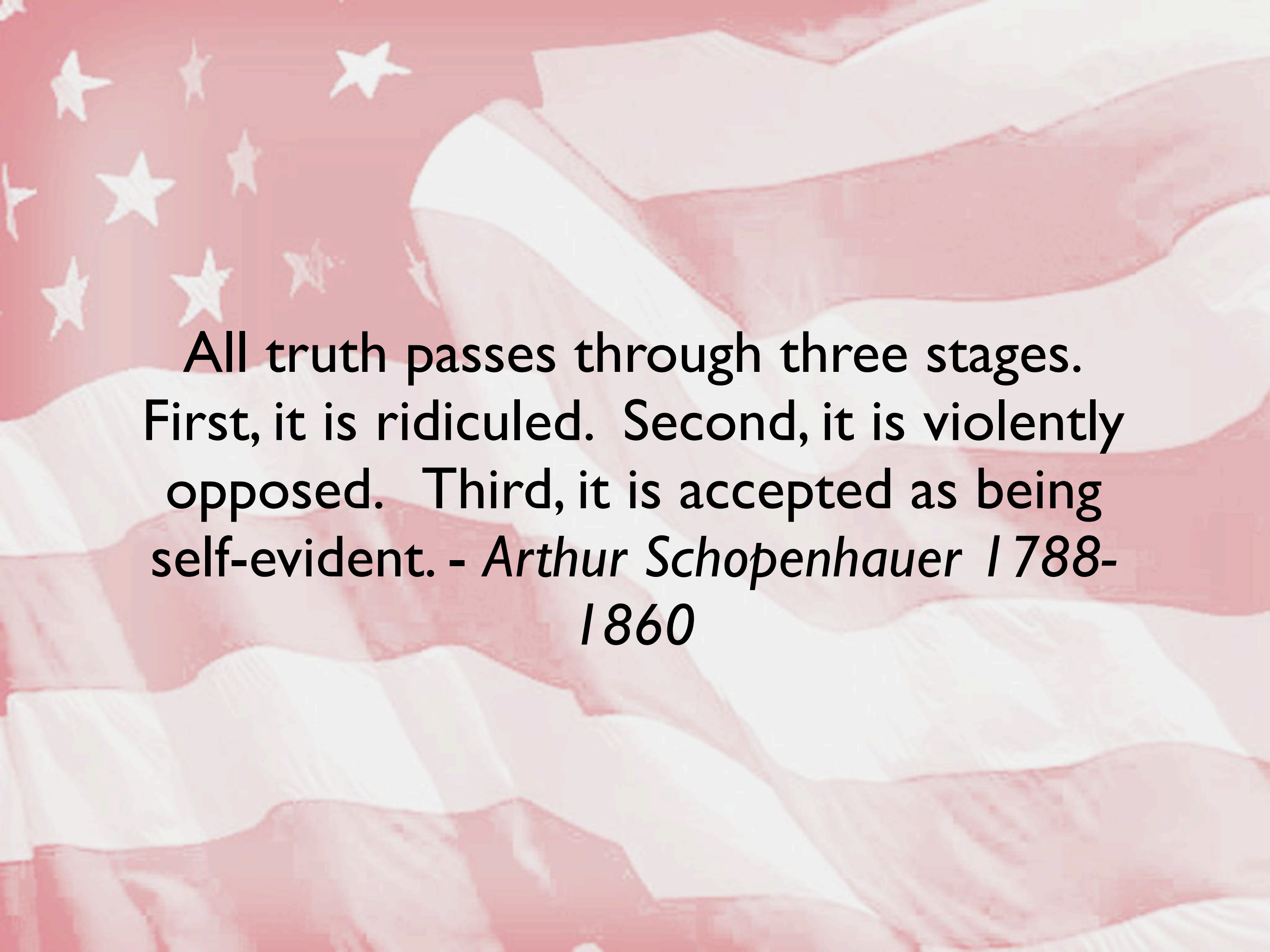
An ounce of action is worth a ton of theory.  
- *Friedrich Engels 1820-1895*

- Write to the National Commission on Terrorist Attacks upon the U.S. (aka Kean Commission)
  - <http://www.9-11commission.gov/>
  - 301 7th St. SW, Room 5125, Washington, DC 20407
- Call or write your senator and representative
  - Find your senator or representative by going to <http://www.congress.org/>

# So, what can you do?

- Write a letter to your hometown newspaper raising questions that are not being addressed by the Kean Commission
- Join an action-oriented organization like the one at <http://www.911visibility.org>
- March in the streets with signs questioning the official story
- Host an evening presentation for friends and family featuring Barrie Zwicker's video, "*The Great Deception*"
  - <http://www.viewerplus.com/Splash.asp?Stat=Vision>



The background of the image is a stylized, semi-transparent American flag. The stars and stripes are visible but faded, creating a subtle pattern behind the text.

**All truth passes through three stages.  
First, it is ridiculed. Second, it is violently  
opposed. Third, it is accepted as being  
self-evident. - *Arthur Schopenhauer 1788-  
1860***